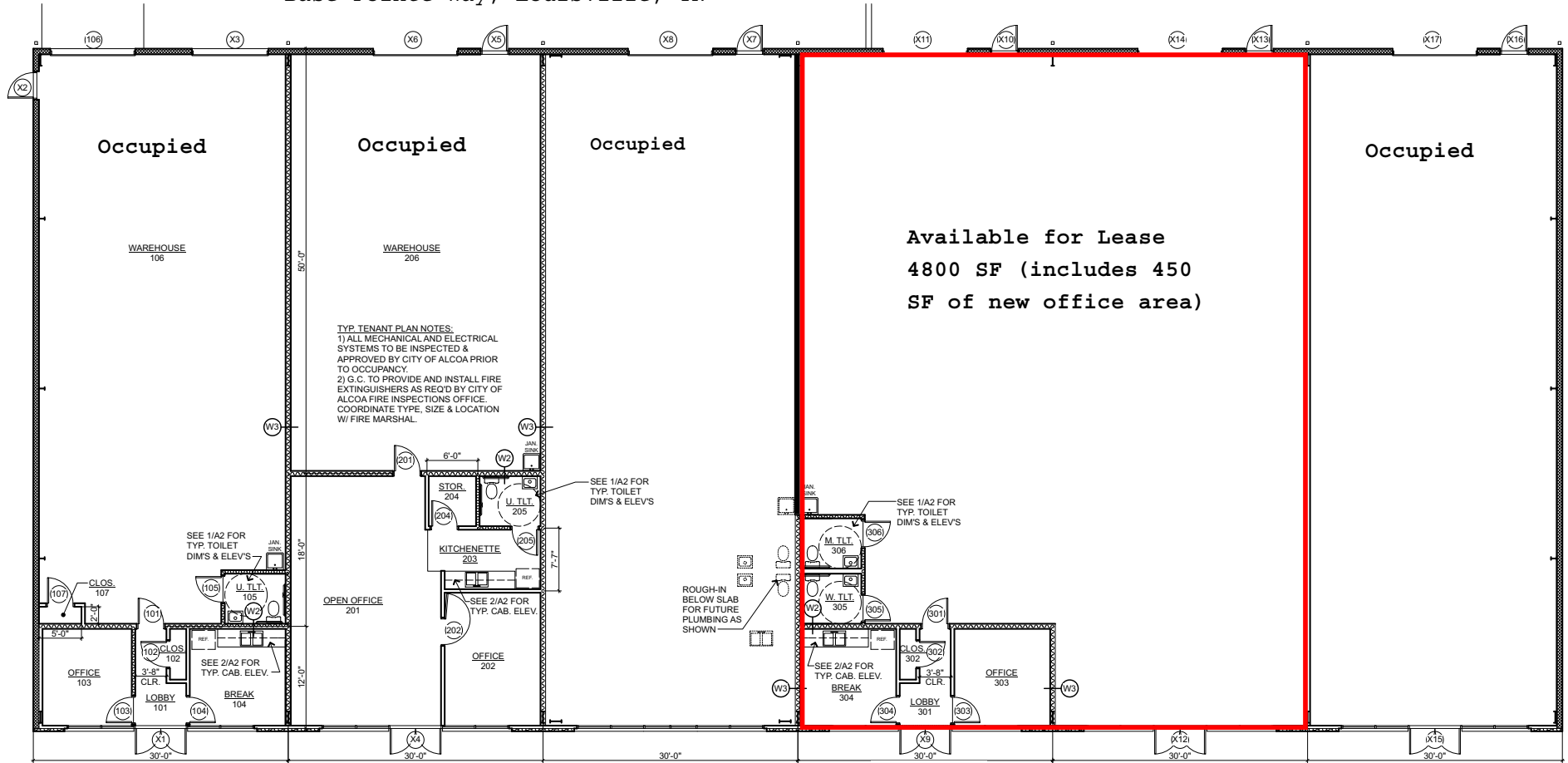


Base Pointe Building 3
Base Pointe Way, Louisville, TN



TYP. TENANT PLAN NOTES:
 1) ALL MECHANICAL AND ELECTRICAL SYSTEMS TO BE INSPECTED & APPROVED BY CITY OF ALCOA PRIOR TO OCCUPANCY.
 2) G.C. TO PROVIDE AND INSTALL FIRE EXTINGUISHERS AS REQ'D BY CITY OF ALCOA FIRE INSPECTIONS OFFICE COORDINATE TYPE, SIZE & LOCATION W/ FIRE MARSHAL.

1705 BASE POINTE WAY
 OFFICE = 400 S.F./100 = (4) OCC.
 WAREHOUSE = 2,000 S.F./300 = (7) OCC.
 TOTAL = 2,400 S.F./11) OCC.

1707 BASE POINTE WAY
 OFFICE = 900 S.F./100 = (9) OCC.
 WAREHOUSE = 1,500 S.F./300 = (5) OCC.
 TOTAL = 2,400 S.F./14) OCC.

1709 BASE POINTE WAY

1711 BASE POINTE WAY
 OFFICE = 450 S.F./100 = (5) OCC.
 WAREHOUSE = TO BE DETERMINED
 TOTAL = TO BE DETERMINED

1713 BASE POINTE WAY

1717 BASE POINTE WAY

1
A1.1

FLOOR PLAN

SCALE: 1/8" = 1'-0"
 NOTE: ALL NEW INTERIOR PARTITIONS ARE TYPE W1 UNLESS NOTED OTHERWISE.
 SEE PARTITION TYPES ON SHEET A2
 = SOUND INSUL. PARTITION

